



MOBILE TRACK SOLUTIONS

TRACK FORWARD

5510T

"D9 Mentality with Articulated Truck Speed"

Ship Weight:

74,500 lbs. (Base Unit)

Shipping:

FOB (EXW) Elkader, IA

Pricing:

At Factory

Standard Equipment:

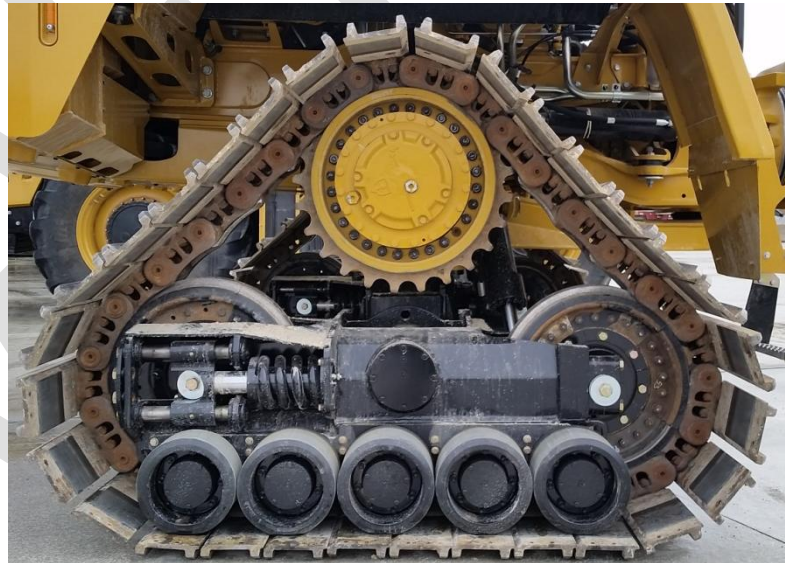
POWERTRAIN & HYDRAULICS

- Built From the Cat® 745C ADT Platform
- 18.1 L Cat® C18 T4F Engine & Cat® Aftertreatment – 511 HP
- Up to 14% Less Fuel Burn Including DEF Burn over 740B
- Caterpillar® CX38 Transmission
- CX38 has 18% Fewer Parts & Weighs 50% Less than 740B
- 9F and 2R Gears – Smoother Shifting
- 21% Faster Acceleration than 740B
- Electronic Clutch Pressure Control
- Improved Automatic Traction Control
- Powerful Automatic Retarder
- Variable Displacement Hydraulic Pump
- Stucchi® 1" VP Flat Face Couplings



UNDERCARRIAGE & SUSPENSION

- Rounded Link Rail – MTS Proprietary Design
- Continuous Radius Rail System
- Cat® D6T SystemOne™ Gen 2i Cartridges
- 5 X 4 Off-Set Mid-Roller Configuration
- Improved Polyurethane Formula
- Polyurethane Wrapped Drive Sprocket
- Large Class D Duo-Cone Idler Seals
- D6T System I Cartridge that's 10% Larger than D6N
- Double Grouser Pads
- Front Three Point Suspension with Nitrogen Charged Accumulators
- (4) Walking Beam Undercarriages provide 16" of Travel



OPERATOR STATION

- Standard 745C Spacious Two-Person Cab with Full ROPS/FOPS
- Cat® 627K Scraper Joystick – Improved Comfort
- Cat® ECM Unit to Operate Scraper