



MT-12 ROLLER BLADE

Ship Weight:
12,850 lbs. (with rear lift system)

Shipping:
FOB (EXW) Elkader, IA

Pricing:
At Factory

Standard Equipment:

HYDRAULICS

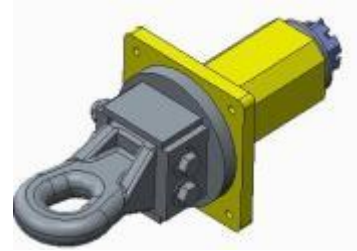
- Pioneer® Quick Couplings, Poppet-style Fittings
- Caterpillar® XT-3ES ¾" 4,000 PSI Hydraulic Hose
- Two Construction Grade 4,000 PSI Cylinders
- Greasable Spherical Bearings on Rod Ends



(Note: Shown with Optional Rear Lift System)

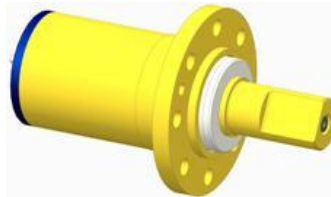
TONGUE ASSEMBLY

- Category 4 Pintle Hitch with 360° Rotation
- Gooseneck Design - allows clearance for dirt to roll ahead



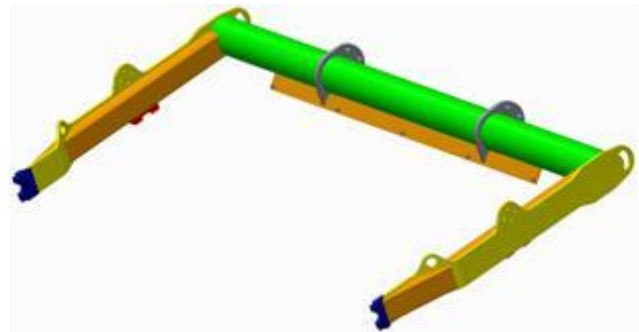
ROLLER DRUM ASSEMBLY

- Drum ¾" Rolled Steel
- Oil Bathed Bearings with Duo-Cone Seals
- Drum is 11' Wide and 36" in Diameter
- End Cap in the Drum for Adding Ballast



ROLLER SCRAPER WELDMENT

- Hardox® 450 Steel Box Blade
- Standard Cat Cutting Edge (reversible)
- Cat Router Bits – used to protect side frame
- Greaseless Bushings at all Hinge Points



BASE FRAME WELDMENT

- Tube Frame Dimensions: 6"x6"x ½"
- Hardox® 450 Steel used throughout for a long life

Configuration & Equipment Options:

HYDRAULICS

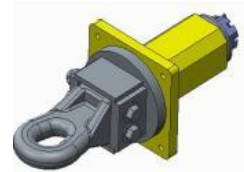
H00366 Quantity 2 - Pioneer ½" ORB Quick Couplings

H00732 Quantity 2 - Pioneer ¾" ORB Quick Couplings

H00755 Quantity 2 - Pioneer 1" ORB Quick Couplings

HITCHES

B00096 Category 4 Pintle Hitch with 360° Rotation

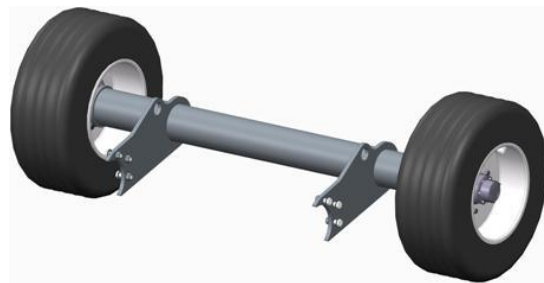


B00129 Heavy Duty Pintle Hitch with 360° Rotation, uses 1 ¼" Pin



B00187 Heavy Duty Pintle Hitch with 360° Rotation, uses 2 ¼" Pin

REAR LIFT SYSTEM



R00499 Rear Frame and Wheel Assembly; Two 425-65 R 22.5 Super Single Tires; and Two Heavy Duty 10 Bolt Rims