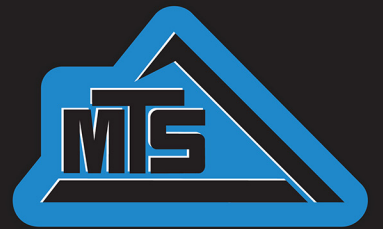


# 3630T

CONSTRUCTION-GRADE TRACTOR

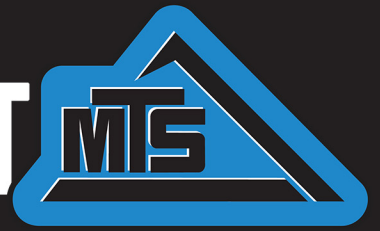


MOBILE TRACK SOLUTIONS



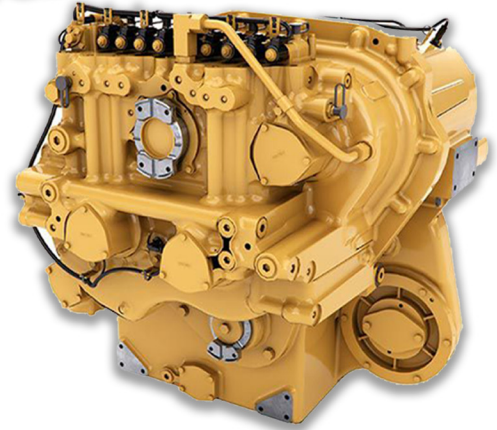
3630T

# STANDARD EQUIPMENT



## ENGINE & AFTERTREATMENT

- 18.1 Liter Cat® T4F C18 ACERT™ Diesel
- 630 Rated Horsepower (410 kW) at 1800 RPM
- In-Line 6 Cylinder, 4 Stroke-Cycle
- Large Radiator and Cooling System
- Advanced MEUI™-C Injector Platform
- Next Gen Precise Microburst Fuel Injection
- Turbocharged & Air-to-Air Aftercooled
- Infinitely Variable Geometry Turbo
- Integrated Cat® NOx Reduction System (NRS)
- Diesel Oxidation Catalyst (DOC)
- Diesel Particulate Filter (DPF)
- Selective Catalytic Reduction (SCR)
- Ammonia Oxidation Catalyst (AMOX)
- Pump Electronics Tank Unit (PETU)
- DEF tank is integrated into fuel tank
- Long Maintenance Intervals



## TRANSMISSION & AXLES

- Cat® TA22H Powershift 16 x 4 Transmission
- Improved Shifting Software Over Previous Model
- 21 mph (33.8 km/hr) Max Road Speed
- Improved Clutch Plate Orifices for Smooth Shifts
- Inching Pedal for Convenience
- 29° Total Articulation Angle
- 12° Oscillation Each Way, 24 ° Total
- Extreme Duty Outboard Planetaries
- Front and Rear Differential Locks
- Dual Three Piston Dry Caliper ISO Compliant Brakes

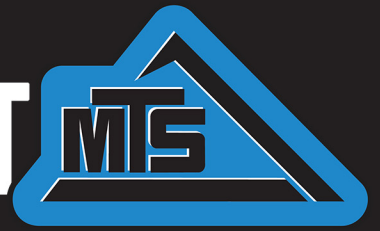
## HYDRAULICS & ELECTRICAL

- Combined 120 GPM (454 L/min) High Flow Pumps
- 3,100 Max Hydraulic System PSI with 31 Gallon (117 L) Reservoir
- Six Electro-Hydraulic Valves with Digital Flow Control
- 3.5" Steering Cylinders
- 12V - 200 amp Alternator with Three 12V, 1150 CCA Batteries
- 20 Work Lights Total For Excellent Visibility



3630T

# STANDARD EQUIPMENT



## UNDERCARRIAGE SYSTEM & TRACKS

- Integrated Hardened Axle Mounting System
- Outboard Planetary System
- All Bearings Oversized and Metal Face Sealed for Life
- Positive Drive Track Engagement
- 4.6 Lug Engagement at All Times
- 8.5" Drive Lugs, Largest in the Industry
- Large 80.7 ° Single Piece Cast Drive Wheel
- 16" Polyurethane Coated Midrollers for Long Life
- Track Tension Monitoring System in Cab
- 30" Camoplast™ 6500 HE Series Extreme Duty Scraper Track
- HD Track Tension Cylinder



## DELUXE CAB

- Largest Cab in the Industry, 175.5 ft<sup>3</sup> (4.9 m<sup>3</sup>)
- Integral FOPS/ ROPS Cab
- Seat Mounted Right-Handed Console with Touch Screen
- 40° Right Swivel Seat Range
- Semi-Active Suspended and Heated Seat
- 10" HD Monitor
- Programmable Center HD Display Provides Readouts
- Large Training Seat
- Premium Radio FM/AM with USB Port & Bluetooth
- Front and Rear Sun Visors
- Four Cup Holders
- Automatic Climate Control
- Decelerator Pedal



## OTHER FEATURES

- Hydraulically Actuated Retractable Cab Steps
- Braided Steel Tow Cable Mounted
- Lengthened Frame for Better Weight Distribution
- Master Shut Off Switch - Lockable
- 260 Gallon (832.8 Liter) Fuel Tank
- 12.5 Gallon (47 Liter) DEF Tank, Integrated into Fuel Tank
- 3.15" Pivot Pin
- Flip Up Side Hood Panels with Gas Shocks
- Swing Out Grille and Cooler
- Back Up Alarm
- Beacon Lights Standard





### POWER

Engine HP at Rated RPM	630 hp at 2,000 rpm	469.79 kw at 2,000 rpm
------------------------	---------------------	------------------------

### ENGINE

Manufacturer	Caterpillar	
Peak Engine RPM	2,190 rpm	
Type	Cat ACERT C18 Tier 4 Final	
Aspiration	Single Stage Aftercooled Turbocharger	
Filter, Engine air	Dual Stage Particulate Filter	
Cylinders/Number of valves/Displacement	6 cyl./24 Valve/18.1L	
Bore/Stroke	5.71 in / 7.2 in	145 mm / 183 mm
Compression Ratio	16.0:1	
Lubrication	Full-pressure, full-flow filtration with bypass	
Filter Oil	Two replaceable spin-on canister oil filters	
Rated RPM	2,000 rpm	

### ELECTRICAL

Alternator	200 amp Delco alternator	
	3 X 1150 cca 12v batteries	

### TRANSMISSION

Transmission	Cat TA22H 16 speed Powershift Transmission	
Gears	16 Forward / 4 Reverse	
Auto Shift	Standard	

### AXLES

Rear Axle Diameter	2.5 in	63.5 mm
Axle Width	104 in	2,641 mm
Differential Lock	Standard	
4 Axle to Axle	168 in	4,267 mm

### TRACK BELTS

Description	Camso 6500 Series	
Standard Width	30 in	762 mm
Optional Width	36 in	914 mm

### STEERING

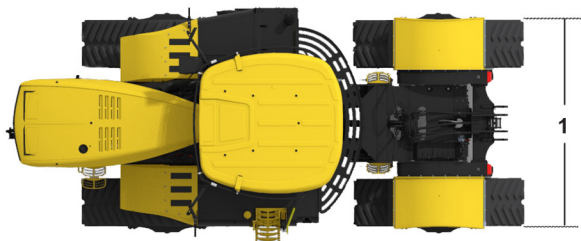
Hydraulic Power Steering	Standard	
--------------------------	----------	--

### FINAL DRIVES

Planetaries	Outboard	
-------------	----------	--

### DRAWBAR

Half-Clamp Drawbar and Hitch Plate	Option	
Quick Hitch Drawbar and Hitch Plate	Standard	
Max Vertical Hitch Load	34,000 lbs	15,422 kg



### HYDRAULICS

Description	Closed Center Pressure Compensated	
Remote Valves	6 EH SECTIONAL VALVE	
Maximum PSI	3,100 psi	21,000 kPa
High Flow Hydraulic Pump	2X 56 gpm	2x 212 lpm
Total Tractor Hydraulic Flow	120 gpm	454 lpm
Available Flow at single remote valve (Dual Scraper)	33 gpm	125 lpm
Available Flow at single remote valve (High Flow Scraper)	55 gpm	208 lpm

### CAPACITIES

Fuel Tank	260 gal	984 L
DEF Tank	12.5 gal	47 L
Crankcase w/ Filter	38 qt	36 L
Differential Oil	12.1 gal	46 L
Hydraulic System	31 gal	117 L
Cooling System	18.5 gal	70 L

### BRAKES

Hydraulic Power, Dry Disk	Standard	
Hydraulic Scraper Brakes	Standard	

### WHEELBASE

Wheelbase Length	168 in	4,256 mm
Turning Radius	323 in	8,199 mm

### CAB

Volume	175.5 ft <sup>3</sup>	4.97 m <sup>3</sup>
Glass	86 ft <sup>2</sup>	7.99 m <sup>2</sup>

### DIMENSIONS

Base Shipping Weight	65,320 lbs	29,020.8 kg
1 Width (Overall Shipping)	143 in	3,632 mm
2 Length (Overall Shipping)	316 in	8,026 mm
3 Height (Overall Shipping)	152 in	3,860 mm
Ground Clearance	21 in	533 mm
Overall Track Width	128 in	3,251 mm

### MISC.

Degrees of Articulation	29°	
Degrees of Oscillation	12°	

