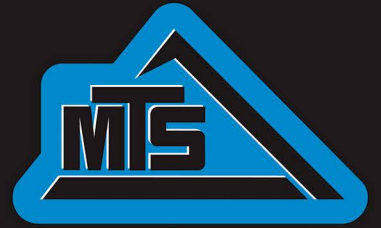


3630 SWITCHBACK

CONSTRUCTION-GRADE TRACTOR



MOBILE TRACK SOLUTIONS



3630 SWITCHBACK STANDARD EQUIPMENT



POWER

Engine HP at Rated RPM	630 hp at 2,000 rpm	469.79 kw at 2,000 rpm
------------------------	---------------------	------------------------

ENGINE

Manufacturer	Caterpillar	
Peak Engine RPM	2,190 rpm	
Type	Cat ACERT C18 Tier 4 Final	
Aspiration	Single Stage Aftercooled Turbocharger	
Filter, Engine air	Dual Stage Particulate Filter	
Cylinders/Number of valves/Displacement	6 cyl./24 Valve/18.1L	
Bore/Stroke	5.71 in / 7.2 in	145 mm / 183 mm
Compression Ratio	16.0:1	
Lubrication	Full-pressure, fullflow filtration with bypass	
Filter Oil	Two replaceable spin-on canister oil filters	
Rated RPM	2,000 rpm	

ELECTRICAL

Alternator	200 amp Delco alternator	
	3 X 1150 cca 12v batteries	

TRANSMISSION

Transmission	Cat TA22H 16 speed Powershift Transmission	
Gears	16 Forward / 4 Reverse	
Auto Shift	Standard	

AXLES

Rear Axle Diameter	2.5 in	63.5 mm
Axle Width	104 in	2,641.6 mm
Differential Lock	Standard	
5 Axle to Axle	193 in	4,902 mm

WHEEL OPTIONS

Alliance Duals	VF710/70R42
----------------	-------------

STEERING

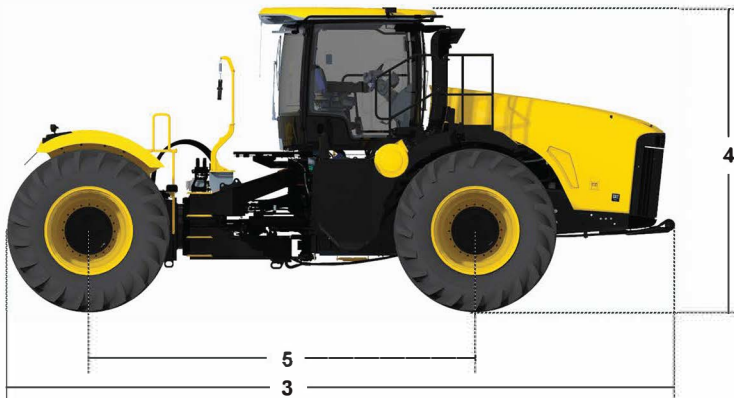
Hydraulic Power Steering	Standard
--------------------------	----------

FINAL DRIVES

Planetarys	Outboard
------------	----------

DRAWBAR

Gooseneck Hitchplate	Standard	
Quick Hitch Drawbar and Hitch Plate	Option	
Gooseneck Hitch Load	42,000 lbs	19,050.8 kg
Max Vertical Hitch Load	34,000 lbs	15,422.1 kg



HYDRAULICS

Description	Closed Center Pressure Compensated	
Remote Valves	6 EH SECTIONAL VALVE	
Maximum PSI	3,100 psi	21,000 kPa
High Flow Hydraulic Pump	2X 60 gpm	2x 230 lpm
Total Tractor Hydraulic Flow	120 gpm	454 lpm
Available Flow at single remote valve (Dual Scraper)	33 gpm	125 lpm
Available Flow at single remote valve (High Flow Scraper)	55 gpm	208 lpm

CAPACITIES

Fuel Tank	265 gal	1,002 L
DEF Tank	12.5 gal	47 L
Crankcase w/ Filter	38 qt	36 L
Differential Oil	12.1 gal	46 L
Hydraulic System	31 gal	117 L
Cooling System	18.5 gal	70 L

BRAKES

Hydraulic Power, Dry Disk	Standard
Hydraulic Scraper Brakes	Standard

WHEELBASE

Wheelbase Length	193 in	4,902 mm
Dual Turning Radius	326 in	8,280 mm
LSW Turning Radius	315 in	8,001 mm

CAB

Volume	175.5 ft ³	4.97 m ³
Glass	86 ft ²	7.99 m ²

DIMENSIONS

Base Shipping Weight	59,840 lbs	27,143 kg
1 Width (With Duals)	189 in	4,800 mm
2 Width (Without Duals)	142 in	3,606 mm
3 Length (Overall Shipping)	332 in	8,433 mm
4 Height (Overall Shipping)	152 in	3,860 mm
Ground Clearance	21 in	533 mm
Outer Duals (Shipping Specs per Pair)	81.5 in X 75.06 in	2070 mm X 1906.5 mm
Outer Duals (Shipping Weight per Pair)	2840 lbs	1288 kg

MISC.

Degrees of Articulation	36°
Degrees of Oscillation	360°

