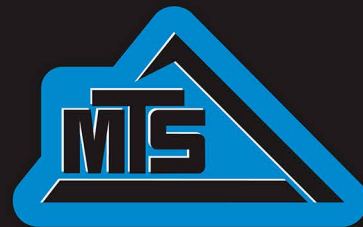


3630

CONSTRUCTION-GRADE TRACTOR

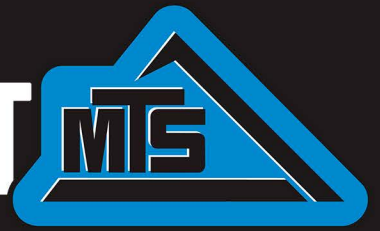


MOBILE TRACK SOLUTIONS



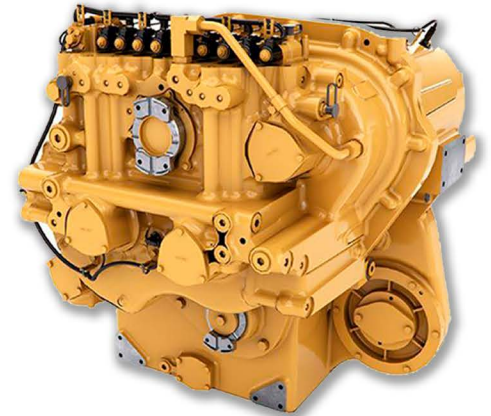
3630

STANDARD EQUIPMENT



ENGINE & AFTERTREATMENT

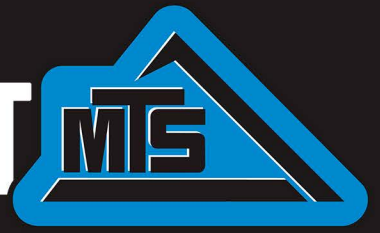
18.1 Liter Cat® T4F C18 ACERT™ Diesel
630 Rated Horsepower (410 kW) at 1800 RPM
In-Line 6 Cylinder, 4 Stroke-Cycle
Large Radiator and Cooling System
Advanced MEUI™-C Injector Platform
Next Gen Precise Microburst Fuel Injection
Turbocharged & Air-to-Air Aftercooled
Infinitely Variable Geometry Turbo
Integrated Cat® NOx Reduction System (NRS)
Diesel Oxidation Catalyst (DOC)
Diesel Particulate Filter (DPF)
Selective Catalytic Reduction (SCR)
Ammonia Oxidation Catalyst (AMOX)
Pump Electronics Tank Unit (PETU)
DEF tank is integrated into fuel tank
Larger Radiator and Cooling System
Long Maintenance Intervals



TRANSMISSION & AXLES

Cat® TA22H Powershift 16 x 4 Transmission
Improved Shifting Software Over Previous Model
21 mph (33.8 km/hr) Max Road Speed
Improved Clutch Plate Orifices for Smooth Shifts
Inching Pedal for Convenience
29° Total Articulation Angle
15° Oscillation Each Way, 30° Total
Extreme Duty Outboard Planetaries
Front and Rear Differential Locks
Dual Three Piston Dry Caliper ISO Compliant Brakes
Alliance Duals VF710/70r42 or Goodyear/Titan 202D 1250LSW





HYDRAULICS & ELECTRICAL

Combined 120 GPM (454 L/min) High Flow Pumps
 3,100 Max Hydraulic System PSI with 31 Gallon (117 L) Reservoir
 Six Electro-Hydraulic Valves with Digital Flow Control
 3.5" Steering Cylinders
 12V - 200 amp Alternator with Three 12V, 1150 CCA Batteries
 20 Work Lights Total For Excellent Visibility



DELUXE CAB

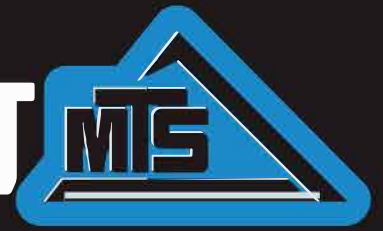
Largest Cab in the Industry, 175.5 ft³ (4.9 m³)
 Integral FOPS/ ROPS Cab
 Seat Mounted Right-Handed Console with Touch Screen
 40° Right Swivel Seat Range
 Semi-Active Suspended and Heated Seat
 10" HD Monitor
 Programmable Center HD Display Provides Readouts
 Large Training Seat
 Premium Radio FM/AM with USB Port & Bluetooth
 Front and Rear Sun Visors
 Four Cup Holders
 Automatic Climate Control
 Decelerator Pedal



OTHER FEATURES

Manually Folding Cab Steps
 Braided Steel Tow Cable Mounted
 Lengthened Frame for Better Weight Distribution
 Master Shut Off Switch - Lockable
 265 Gallon (1,002 Liter) Fuel Tank
 12.5 Gallon (47 Liter) DEF Tank, Integrated into Fuel Tank
 3.15" Pivot Pin
 Flip Up Side Hood Panels with Gas Shocks
 Swing Out Grille and Cooler
 Back Up Alarm
 Beacon Lights Standard





POWER

Engine HP at Rated RPM 630 hp at 2,000 rpm 469.79 kw at 2,000 rpm

ENGINE

Manufacturer	Caterpillar
Peak Engine RPM	2,190 rpm
Type	Cat ACERT C18 Tier 4 Final
Aspiration	Single Stage Aftercooled Turbocharger
Filter, Engine air	Dual Stage Particulate Filter
Cylinders/Number of valves/Displacement	6 cyl./24 Valve/18.1L
Bore/Stroke	5.71 in / 7.2 in 145 mm / 183 mm
Compression Ratio	16.0:1
Lubrication	Full-pressure, full-flow filtration with bypass
Filter Oil	Two replaceable spin-on canister oil filters
Rated RPM	2,000 rpm

ELECTRICAL

Alternator	200 amp Delco alternator
	3 X 1150 cca 12v batteries

TRANSMISSION

Transmission	Cat TA22H 16 speed Powershift Transmission
Gears	16 Forward / 4 Reverse
Auto Shift	Standard

AXLES

Rear Axle Diameter	2.5 in 63.5 mm
Axle Width	104 in 2,641.6 mm
Differential Lock	Standard
5 Axle to Axle	168 in 4,267 mm

WHEEL OPTIONS

Alliance Duals	VF710/70r42
Goodyear/Titan	202D 1250LSW

STEERING

Hydraulic Power Steering	Standard
--------------------------	----------

FINAL DRIVES

Planetaries	Outboard
-------------	----------

DRAWBAR

Half-Clamp Drawbar and Hitch Plate	Option
Quick Hitch Drawbar and Hitch Plate	Standard
Max Vertical Hitch Load	34,000 lbs 15,422.1 kg



HYDRAULICS

Description	Closed Center Pressure Compensated	
Remote Valves	6 EH SECTIONAL VALVE	
Maximum PSI	3,100 psi	21,000 kPa
High Flow Hydraulic Pump	2X 60 gpm	2x 230 lpm
Total Tractor Hydraulic Flow	120gpm	454 lpm
Available Flow at single remote valve (Dual Scraper)	33 gpm	125 lpm
Available Flow at single remote valve (High Flow Scraper)	55 gpm	208 lpm

CAPACITIES

Fuel Tank	265 gal	1,002 L
DEF Tank	12.5 gal	47 L
Crankcase w/ Filter	38 qt	36 L
Differential Oil	12.1 gal	46 L
Hydraulic System	31 gal	117 L
Cooling System	18.5 gal	70 L

BRAKES

Hydraulic Power, Dry Disk	Standard
Hydraulic Scraper Brakes	Standard

WHEELBASE

Wheelbase Length	168 in	4,256 mm
Dual Turning Radius	354 in	8,992 mm
LSW Turning Radius	338 in	8,592 mm

CAB

Volume	175.5 ft ³	4.97 m ³
Glass	86 ft ²	7.99 m ²

DIMENSIONS

Base Shipping Weight	53,890 lbs	24,444 kg
1 Width (With Duals)	189 in	4,800 mm
2 Width (Without Duals)	142 in	3,606 mm
Width (LSW)	159 in	4,038 mm
3 Length (Overall Shipping)	308 in	7,823 mm
4 Height (Overall Shipping)	152 in	3,860mm
Ground Clearance	19 in	482 mm
Outer Duals(Shipping Specs per Pair)	81.5 in X 75.0 2070 mm X 1906.5 mm	
Outer Duals(Shipping Weight per Pair)	2840 lbs	1288 kg

MISC.

Degrees of Articulation	29°
Degrees of Oscillation	15°

